

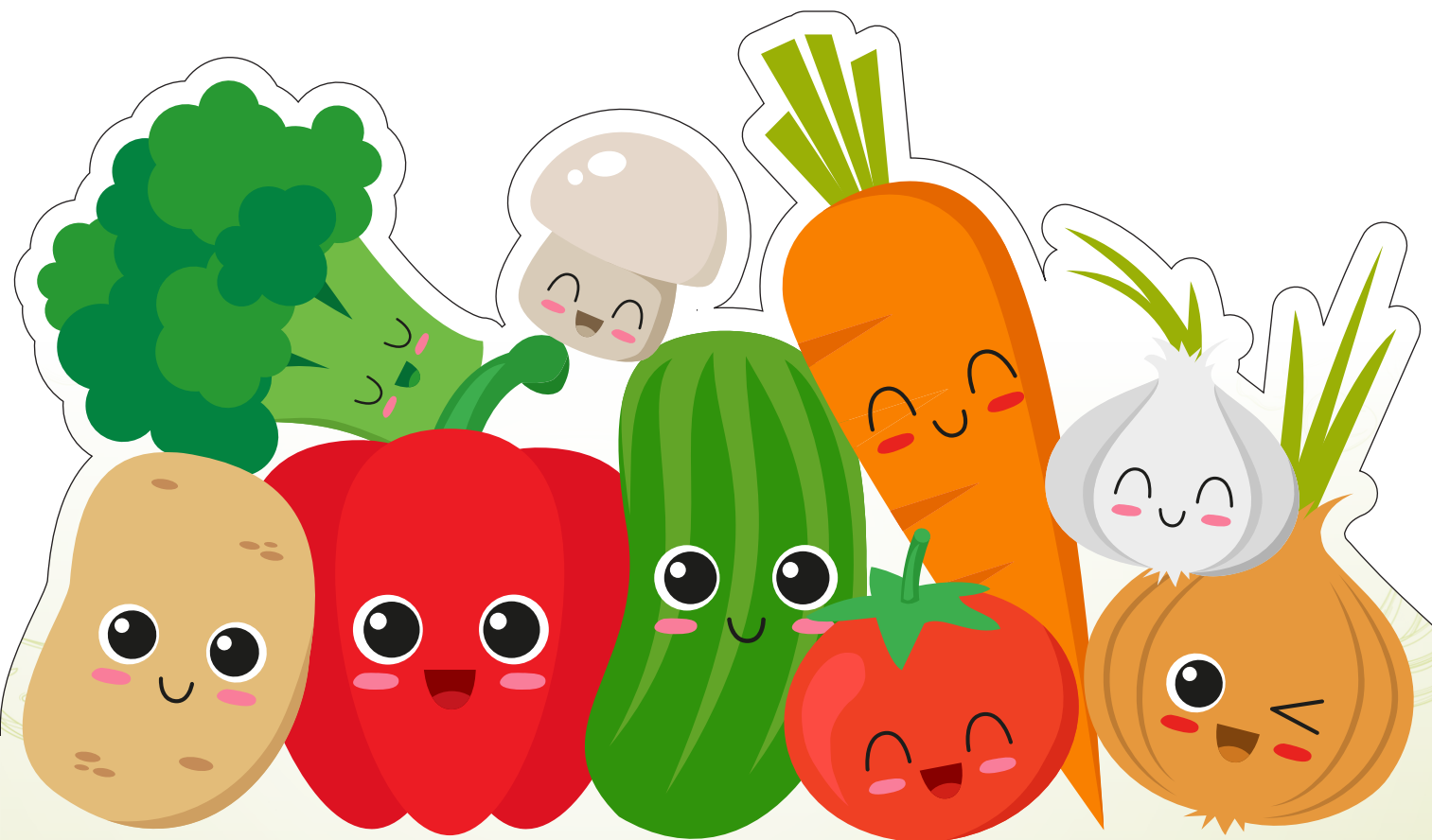


**Curovital**

MULTIVITAMIN DIVISION

A DIVISION OF INTRA LIFE PRIVATE LIMITED

**NEW LAUNCHES**



For **Vital Care** in Nutritional  
**DEFICIENCY**



**Curovital**

MULTIVITAMIN DIVISION

A DIVISION OF INTRA LIFE PRIVATE LIMITED

**CALBOVIC** Softgel Caps.  
Calcitriol 0.25mcg + Elemental Calcium  
250mg + Zinc 7.5mg

**CALBOVIC-D** Softgel  
Vit. D3 60000 IU

**CALBOVIC-D** Tabs.  
Vit. D3 60000 IU (Chewable Tab)  
Orange Flavor

**CALBOVIC-D** Sachet  
Cholecalciferol 60000 I.U.

**CALBOVIC-D** Solution  
Vit. D3 60000 IU

**CALBOVIC-FORTE** Softgel Caps.  
Calcitriol 0.25mcg + Elemental Calcium 500mg  
(as Calcium Carbonate 200 mg) + EPA 90 mg  
+ DHA 60 mg + Methylcobalamin 1500mcg  
+ Folic Acid 400mcg + Boron 1.5mg

**CALBOVIC-PLUS** Softgel Caps.  
Methylcobalamin 750mcg + Calcitriol 0.25mcg  
+ Calcium Carbonate 500mg + Pyridoxine  
Hydrochloride B6 1.5mg + Folic Acid 0.75mg

**CALCIWAVE** Tabs.  
Calcium Citrate 1000mg + Magnesium 100mg  
+ Zinc 4mg + Vit. D3 200 I.U.

**CALCIWAVE** Susp.  
Calcium Carbonate 250mg + Magnesium 75mg  
+ Zinc 2mg + Vitamin D3 200IU

www.intralifeindia.com



# Curovital

MULTIVITAMIN DIVISION

A DIVISION OF INTRA LIFE PRIVATE LIMITED

# Curovital

MULTIVITAMIN DIVISION

A DIVISION OF INTRA LIFE PRIVATE LIMITED

**CALCIWAVE-500** Tabs.  
Calcium Carbonate 500mg+Vitamin D3 250I.U

**CALCIWAVE-Z** Tabs.  
Calcitriol 0.25mcg + Calcium Carbonate 500mg + Calcium (Derived From An Organics Source Oyster Shells) 200mg + Zinc 7.5mg

**COBALFER** Tabs.  
Sodium Feredetate 700mg +Folic Acid 1.5mg + Vit. B12 15mcg + Zinc Sulphate Monohydrate 61.8mg

**COBALFER** Syrup  
Sodium Feredetate 231mg

**ENZOTIME** Syrup (100ml, 200ml)  
Diastase 50mg + Pepsin 10mg

**ENZOTIME** Caps.  
Diastase (1:800) 25mg + Papain 20mg + Simethicone 40mg + Vit B1 1mg+Vit B2 2.5mg+Vit B6 0.5mg+Niacinamide 15mg + Folic Acid 75mcg + D-Panthenol1mg

**ENZOTIME-GOLD** Tabs.  
Activated Charcoal 75mg + Fungal Diastase 100mg + Papain 60mg

**ENZOTIME PLUS** Caps.  
Pancreatin 212mg+ Vitamin b3 (niacinamide) 16mg+ Fungal Diastase 12.5mg etc.

**FIFCAL** Caps.  
Carbonyl Iron (Eq. To Elemental Iron)50mg + Zinc Sulphate Monohydrate USP 61.8mg (Eq. to 22.5mg of Elemental Zinc) + Folic Acid 0.5mg

**FIFCAL** Susp.  
Carbonyl Iron 60mg + Folic Acid 1mg + Cyanocobalamin 6mcg +Zinc Sulphate 11mg

**HIGH-TIME** Syrup  
Cyproheptadine HCl 2mg +Tricholine Citrate 275mg

**INTRA-VITAL** Soft gel.  
Ferrous Fumarate 10mg +Magnesium Sulphate 10mg + Copper Sulphate 1mg + Potassium Iodide 0.15mg + Chromium Picolinate 25mcg +Ginseng Extract Powder 42.5mg etc.,

**LIFODOL** Soft gel.  
Alpha Calcidol 0.25mcg +Calcium Carbonate 250mg

**LYCOWAY** Syrup.  
Lycopene 6% 1000.00 mcg +L-Ascorbic Acid 33.33 mg + Vitamin E Acetate 9.90 mg etc.

**LYCOWAY** Soft gel Caps.  
Lycopene 6% USP 2000 mcg, Lutein 6% USP 2000 mcg, Magnesium Sulphate BP 1 mg, Zinc Oxide IP 15 mg, Copper Sulphate BP 1 mg, Sodium Selenite Pentahydrate 75 mcg, Chromium picolinate USP 25 mcg, Excipients q.s.

**OXIWAVE** Tabs.  
Calcium Pantothenate 12.5mg + Folic Acid 1mg + Zinc Oxide 15mg + Cupric Oxide 2.5mg + Sodium Selenate 60mcg +Manganese Chloride 1.4mg+Chromium Chloride 65mcg and Vitamins

**OXIWAVE** Syp.  
Vit. B1 4.5mg + Vit. B2 2.5mg+ Vit. B6 1.5mg + Vit. B12 5mcg + Ferric Ammonium Citrate 87.5mg + Zinc 33mg + Potassium Iodide 98.12mcg + Copper 1.77mg etc.

**OXIWAVE-Z** Tabs.  
Vitamin-C 33.33mg + Folic Acid 100mcg+ Methylcobalamin 1mcg+Zinc 10mg+ Manganese 2mg + Copper Gluconate Eq. To Elemental Copper 0.90mg etc.

**OXIWAVE-Z** Susp.  
Lysine Hcl 30 mg + Niacinamide 15 mg + Myo-Inositol 10 mg + Vitamin E 5 mg + B-Carotene Dispersion 3mg + D-Panthenol 2.5 mg + Thiamine (Hydrochloride) 1 mg etc.

**OXIWAVE-Z** Susp.  
Cholecalciferol 200 I.u.+Thiamine Hcl 1mg + Riboflavin Na Phosphate 1 Mg Pyridoxine Hcl 1 Mg + Niacinamide 15 Mg+Cyanocobalamin 1 Mcg + D-panthenol 2.5 Mg + Zinc Sulphate 3 Mg+L-lysine 30 Mg+B-carotene 38 Mg etc.

**PHILCEE** CHEWABLE TAB  
Vitamin C 500mg + Zinc 5mg (Orange Flavor)

**PROTISEAL** Syrup  
Protein Hydrolysate 100mg + L-Lysine 25mg + Nicotinamide 15mg +Vitamin C 6mg + Vitamin B1 1.20mg+Vitamin B2 1mg+ VitaminB6 1mg + Folic Acid 150mcg+ Iron 23.46mg + Zinc 2.34mg + Manganese 5.50mg"

**RICH-IT** Energy Drink  
Dextrose 17.5gm + Sucrose 14gm +Zinc Sulphate 32.5mg + Vitamin C 40mg + Lacto Bacillus 20 million spores + Sodium Chloride 1.82gm + Potassium Chloride 0.87gm + Magnesium Sulphate 0.50gm

**STUNNER-4G** Soft gel Caps.  
Ginseng Extract Powder 42.5mg +Wheat Germ Oil 25mg + Citrus Bioflavonoids 20mg +Grape Seed Extract 15mg+Natural Mixed Carotenoids (10% Dispersion)11.33mg+Green Tea Extract eq. To Polyphenols 10mg + Ginkgo Biloba Extract 10mg + Piperine 5mg +Lutein 250mcg + Choline Bitartrate 25mg etc."

**STUNNER-5G** Soft gel Caps.  
Omega 3 FA Providing Ecosapentaenoic Acid (EPA) 18% 90mg+ Docosahexaenoic Acid (DHA) 12% 60mg + Citrus Bioflavonoids75mg + Ginkgo Biloba Extract 60mg+Ginseng Extract 45mg etc."

**STUNNER-GOLD** Caps.  
Ginseng Extract Powder (26%) 21.25mg + Ginkgo Biloba Extract 20mg + Citrus Bioflavonoid (7%) 12.5mg + Green Tea Extract 10mg + Mixed Carotene (7%)Dispersion 5mg + Garlic Powder (Odourless) 2mg etc.

**VITATIME** Caps.  
Lactic Acid Bacillus 1000 lac Sporogenes + Vit. B2 10mg + Vit. B6 3mg+ B1 10mg + Vit. B12 10mcg + Folic Acid 1500mcg + Vit. B3 75mg + Calcium Pantothenate 20mg + Vit. C 75mg + Zinc Sulphate 61.8mg

**VITATIME** Tabs.  
Lactic Acid Bacillus 1000 lac Sporogenes + Vit. B2 10mg + Vit. B6 3mg+ B1 10mg + Vit. B12 10mcg + Folic Acid 1500mcg +Vit. B3 75mg+ Calcium Pantothenate 20mg + Vit. C 75mg + Zinc Sulphate 61.8mg

**VITATIME** Syrup  
Vit.B1 1.275mg + Vit.B2 1.575mg +Vit.B6 1.50mg+Niacinamide 15.75mg + L-Lysine 15mg + D-Panthenol 10mg

**VITATIME C** Tabs.  
Vitamin C 500mg + Zinc 22.5mg

**VITAEXPRESS** Chewable Tabs.  
Vitamin C 1000mg + Vitamin D 1000 IU + Zinc Sulphate 50mg

**ZOLOZINC** Tablets  
Zinc Acetate 50mg

**ZOYAVIT** Tabs.  
Fruit Extract Blend (Phytonutrients) Cherry, Noni, Pineapple, Pomogranate, Acerola Cherry, Blackberry, Cranberry, Grape, Kiwi, Apricot, Amla, Mangos- een, Strawberry, Saw Palmetto Berry 100 mg etc,

**ZOYAVIT** Syrup  
Elemental Zinc as Zinc Gluconate 31.36 mg + Nicotinamide 7.00 mg +L-Lysine HCl 5.00 mg+ L-Arginine 2.50 mg +L-Phenylalanine 2.00mg + Pantothenic Acid 1.25 mg vitamins

**ZINCOTIME** Tabs.  
Grape Seed Extract 50 mg + Vitamin C 40mg + Vitamin B3 18 mg + Vitamin E 10mg + Zinc 10mg+ Magnesium 3mg + Vitamins

**ZINCOTIME** Syrup  
L-Lysine Hydrochloride 5.00mg+Lycopene (6%) 1000 mcg +Vitamin B3 (Niacinamide) 7.50mg + Zinc sulphate Monohydrate eq. to Zinc 5.00 mg + Copper Sulphate eq. to Copper 0.50 mg + Potassium Iodide eq. to Iodine 38.00 mcg etc.

**GOLD-WELL-5G**  
Omega 3 Fatty Acid Providing Ecosapentaenoic Acid (EPA) 18% 90mg + Docosahexaenoic Acid (DHA) 12% 60mg + Citrus Bioflavonoids 75mg + Ginkgo Bi Extract 60mg + Ginseng Extract 45mg + Green Tea

## NEW LAUNCHES

**STUNNER-PLUS** Tabs.  
vitamins, minerals, trace elements and antioxidant (lycopen)

**LIFOZYME DROP**  
Each ml (approx 20drops) contains :alpha-amylase IP 20mg(bacterial 1:800)papain IP 10mgdill oil BP 2mganise oil BP 2mg