

# Nefro casa

— NEPHROLOGY DIVISION —

A DIVISION OF INTRA LIFE PRIVATE LIMITED

## OUR PRODUCT RANGE

- NEW URIMOTO Syrup**  
Cranberry extract 200 MG + D-Mannose 300 MG + Potassium-magnesium citrate 978 MG
- NEW URIMOTO-AV Tabs.**  
kapasmool (GOSYPIUM HERBACEUM) 60 mg + Indravarun (CITRULUS COLOCYNTHIS) 55 mg + Haridara (CURCUMA LONGA) 40 mg + Aloe vera (ALOE BARBADENSIS) 55 mg + Ashoka (SARACA ASOCA) 110 mg + Pippalli (PIPER LONGUM) 20 mg + Sounth (ZINGEBER OFFICINALIS) 20 mg etc.
- NEW URIMOTO-KM Chewable Tablets**  
Cranberry Extract 300 mg (25% Proanthocyanidins) + D-Mannose 600mg
- NEW URIMOTO-KM Sachet**  
Potassium Magnesium Citrate 978mg + D-Mannose - 300mg + Cranberry Extract 200 mg
- NEW URIMOTO-Z Capsule**  
Tamsulosin 0.4mg + Deflazacort 30mg

## NEW LAUNCHES

- NEW MYCOBOON-S-360 Tabs.**  
Mycophenolate sodium 360mg
- NEW TORSILIFE PLUS 50/5 Tabs**  
Spironolactone 50mg + Torasemide 5mg
- NEW MYCOBOON-500 Tabs.**  
Mycophenolate Mofetil 500MG
- NEW KLORPOT Tabs.**  
Potassium Chloride 750 mg
- NEW SEVEFAST 400 Tabs.**  
Sevelamer Carbonate 400 mg
- NEW SEVEFAST 800 Tabs.**  
Sevelamer Carbonate 800 mg



## CHRONIC KIDNEY DISEASE THE SILENT KILLER

Patients with CKD face diminished quality of life, higher risk of other health problems

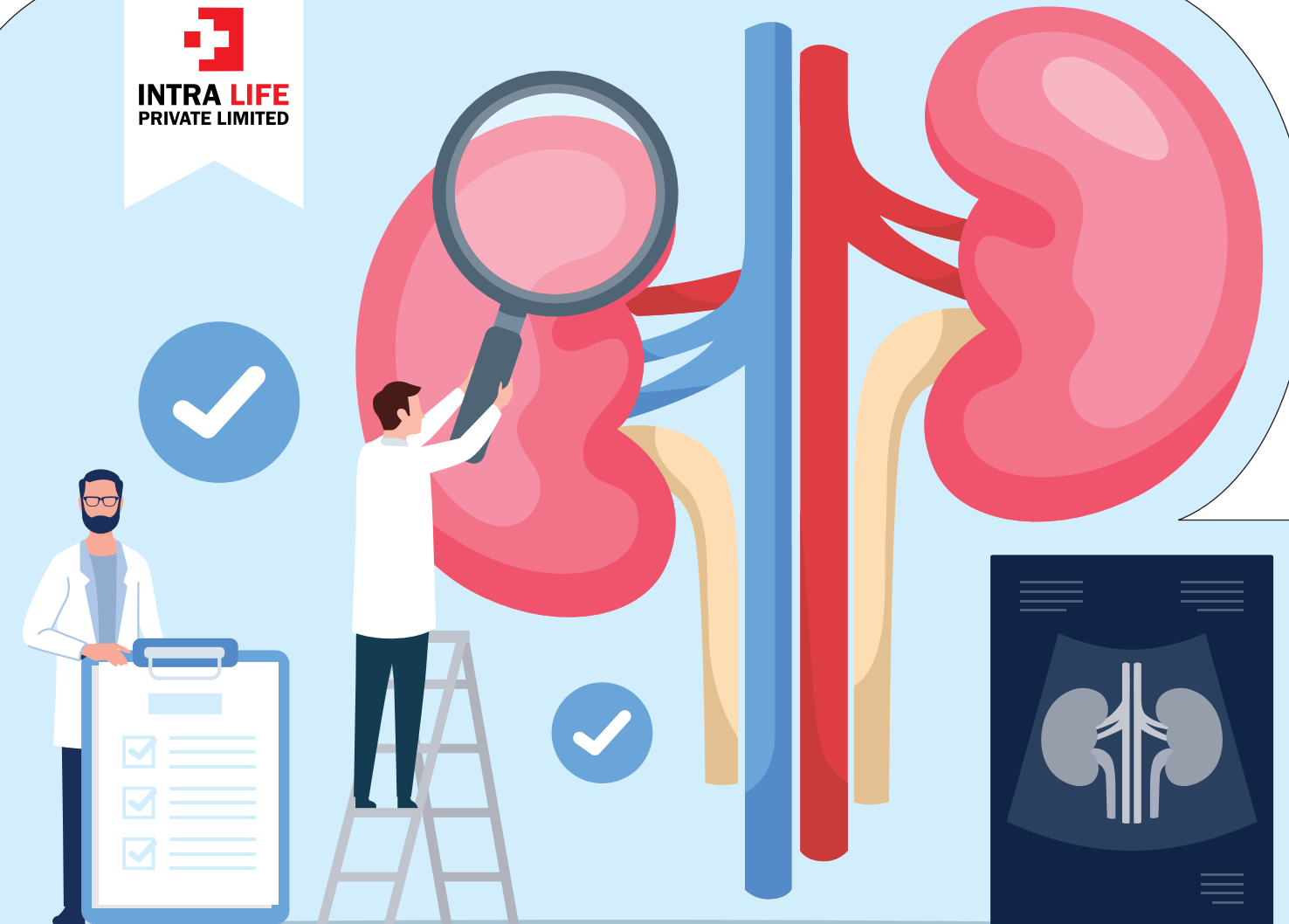
### AlphaDay-DS

L-Threonine 106 mg., L-Tyrosine 60 mg., L-Histidine 76 mg., L-Tryptophan 46 mg., L-Lysine Acetate 210mg., Calcium-3-methyl-2-oxovalerate 134 mg., Calcium-4-methyl-2-oxobutyrates 202 mg., Calcium-2-oxo-3-Phenyl propionate 136mg., Calcium-3-methyl-2-oxobutyrates 172 mg., Calcium-DL-2-hydroxy-4-butyrate 118 mg.

TABLETS



www.intralifeindia.com



## Nephrology Care

— THAT IS A STEP AHEAD —

# Nefro casa

— NEPHROLOGY DIVISION —

A DIVISION OF INTRA LIFE PRIVATE LIMITED

# Nefro casa

— NEPHROLOGY DIVISION —

A DIVISION OF INTRA LIFE PRIVATE LIMITED

## OUR PRODUCT RANGE

**ALKATIME** Syrup  
Disodium Hydrogen Citrate 1.25gm

**ALPHADAY** Tabs.  
Calcium-3-methyl-2-oxo-valerate ( $\alpha$ -ketoanalogue to isoleucine, calcium salt) 67 mg + calcium-4-methyl-2-oxo-valerate ( $\alpha$ -ketoanalogue to leucine, calcium salt) 101 mg etc.

**ALPHADAY-DS** Tabs.  
Calcium-3-methyl-2-oxo-valerate 134 mg (a-ketoanalogue to isoleucine, calcium salt) + Calcium-4-methyl-2-oxo-valerate 202 mg etc.

**ALPHADAY** Sachet  
Calcium-3-methyl-2-oxo-valerate 201 mg (a-ketoanalogue to isoleucine, calcium salt) + Calcium-4-methyl-2-oxo-valerate 303 mg (a-Ketoanalogue to leucine, calcium salt) +

**DIATIME-PRO** POWDER  
Niacinamide + Pantothenic Acid + Folic Acid + Biotin + Calcium + Magnesium + Potassium Chloride etc.

**NEW FINAMIN-TF** Caps.  
Tamsulosin Hydrochloride IP 0.4 mg + Tadalafil IP 5 mg

**FINAMIN 0.2** Tabs.  
Tamsulosin 0.2mg

**FINAMIN 0.4** Tabs.  
Tamsulosin 0.4mg

**FINAMIN-8** Tabs.  
Silodosin 8mg

**FINAMIN-D** Tabs.  
Tamsulosin 0.4mg (MR) + Dutasteride 0.5mg

**FINAMIN PLUS** Caps.  
Silodosin 8mg + Dutasteride 0.5mg

**FLAVOFIX-200** Tabs.  
Flavoxate 200mg

**FLAVOFIX-O** Tabs.  
Flavoxate 200mg + Ofloxacin 200mg

**FOSFODAY** Sachet  
Fosfomycin Trometamol 3gm

**NEW KEYSTRIKE-AV** Syp.  
Punarnava 250mg (Boerhavia diffusa) + Mulethi 250mg (Glycyrrhiza glabra) + Gokhroo 250mg (Tribulus terrestris) + Varuna 250mg (Crataeva nurvala) + Kultha 250mg (Dolichos biflorus) etc.

**NEW KEYRIDE-HP** POWDER  
Glutamic acid + Leucine + Isoleucine + Valine + Cystine + Alpha Lipoic Acid + Niacinamide + Pantothenic Acid + Folic Acid + Biotin + Vitamins & Minerals

**NEW KEYRIDE** Sachet  
Calcium Polystyrene Sulphonate B.P 15 gm

**NEW KEYSTRIKE-AV** Syp.  
Punarnava 250mg (Boerhavia diffusa) + Mulethi 250mg (Glycyrrhiza glabra) + Gokhroo 250mg (Tribulus terrestris) + Varuna 250mg (Crataeva nurvala) + Kultha 250mg (Dolichos biflorus) etc.



www.intralifeindia.com

# Nefro casa

— NEPHROLOGY DIVISION —

A DIVISION OF INTRA LIFE PRIVATE LIMITED

## OUR PRODUCT RANGE

**NEW KEYRIDE-HP** POWDER  
Glutamic acid + Leucine + Isoleucine + Valine + Cystine + Alpha Lipoic Acid + Niacinamide + Pantothenic Acid + Folic Acid + Biotin + Vitamins & Minerals

**NEW KEYRIDE** Sachet  
Calcium Polystyrene Sulphonate B.P 15 gm

**NEW KICKSTONE CAPS**  
Pashanbhed Berginia Lingulata 070mg + Gokhru Terrestrial tribes 065mg + Palash pushp Buta Monosperma 030mg + Daru haridra Berberis aristata 050mg + Punarnava Boerhavia diffusa 020 mg + Makoy Solalum Nigrum 010mg + Lajjalu Mimosa Pudica 020mg + Varun chal Citrullus vulgaris 030mg + Kakdi beej Cucumis sativus 030mg + Apamarg Achyranthes aspera 015mg + Hajrul yahud Bhasma 050mg + Yavakshar Salt 005mg + Shudha Shilajeet Purified Asphaltum 015mg

**NEW KICKSTONE** Syp.  
Pashan bhed Bergenia ligulate 310mg + Gokhru Tribulus terrestris 260mg + Palashpushp Butea monosperma 102mg etc.

**NEW MIRDOT-25/50** Tabs.  
Mirabegron Extended Release 25mg /50mg

**NEW MIRDOT-S 50/5** Tabs.  
Mirabegron 50 mg (as extended release form) + Solifenacin Succinate IP 5mg

**NEW NEFROTIME FORTE** Tabs.  
N-Acetylcysteine (300mg) + Pyridoxamine dihydrochloride (50mg)

**NEW NEFROTIME ADVANCE** Tabs.  
Taurine 500mg + N-Acetylcysteine 150mg (tablet in tablet technology)

**NEW NEFROTIME** Tabs.  
Taurine 500mg + N-Acetylcysteine 150mg

**NEW NEFROTIME** Sachet  
Taurine 500 mg + N-acetylcysteine 150 mg + Niacinamide 12 mg + Pyridoxine Hydrochloride 2 mg + Folic Acid 200 mcg + Vitamin B12 1 mcg

**NEW NITOPURE-100 SR** Tablet  
Nitrofurantoin 100mg Sustained Release

**NEW STRIKE-KEY PLUS** Syrup  
Punarnava Ext. Boerhavia Diffusa, Rt.50mg + Kulathi Ext. Dolichos Biflorus, Sd. 25mg + Shatavari Ext. Asparagus Racemosus, Rt.150mg + Mulethi Ext. etc.

**NEW TORSILIFE PLUS** Tablet  
Spironolactone 50mg + Torasemide 10mg

**NEW TORSILIFE PLUS 5/50** Tabs.  
Torsemide 5mg + Spironolactone 50mg

**NEW TORSILIFE-20/40/100** Tablet  
Torasemide 20mg/40mg/100mg



www.intralifeindia.com